



BSRFC

OFFICIAL MATCH PROGRAMME



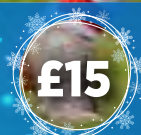
IN THE SPOTLIGHT
TOM BANKS

MATCH REPORT
BISHOP'S STORTFORD 1ST XV
VS OLD ELTHAMIANS

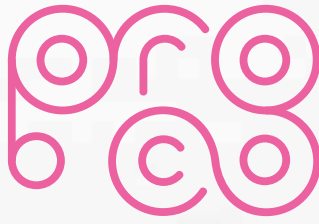


**FIVE 'FASCINATING' FACTS THAT YOU MIGHT NOT
KNOW ABOUT BSRFC**

NATIONAL LEAGUE 1
BISHOP'S STORTFORD RFC V ROSSLYN PARK
22nd December 2018



Members £5



This beautiful programme has been
produced using the very latest
printing gizmos!

It's produced weekly...
Designed Friday morning,
Printed and finished Friday afternoon
and in your good hands
by Saturday lunchtime!

Impressed?

Give us a call to find out more
01279 757333 | proco.com



PRESIDENT'S WELCOME

MICK COLEMAN



It gives me great pleasure to welcome today's 1st XV opposition, Rosslyn Park, to Silver Leys, especially their players, officials and supporters. Last year's results saw the honours shared, with both sides winning away from home, in two tightly fought matches, as was the Parks home victory against us way back in September, when a very strong first half performance saw them hold on in the second half, despite a strong Stortford comeback, to take the game 25-17.

Park have had a good, consistent first half of the season which sees them currently sitting in third position in the table, whilst ourselves have struggled to put even a mini series of wins together. However, there is a strong belief in our camp that we're very close to seeing our fortunes change for the better—preferably starting today! Those fortunes could start with the weather, which was pretty grim, in our defeat away at table toppers Old Elthamians last week. Indeed, including today's game, our last 4 games have been against 4 of the top 5 sides in the league. It's certainly been a very tough few weeks, but encouragingly, we've remained very competitive in all those games. Well done to the Blues, who recorded a fine win over OE's last week to make it 2 wins on the bounce. Again, in atrocious conditions, the boys played some fantastic, gutsy rugby, and now look forward to an away trip to Jersey in the new year.

Whilst we may be struggling on the field, off the field the support for our team is the envy of many others. No other club in this league, or probably any

other, will be hosting well over 300 people for lunch. This of course doesn't just happen, and our extraordinary army of mainly volunteers deserve a very large pat on the back for their fantastic input. Thanks are also due to Gilly, Rob and their staff from Hunsden Catering, who somehow manage to supply great grub to such large numbers week after week.

A very warm welcome is also extended to some of our fantastic sponsors who are here. Barons BMW are our match sponsors today and also 1st XV and Youth section sponsors. Thanks to Simon Hewson and the team from Barons BMW for your continued support throughout the club.

Another valuable supporter is Russell Property, here today as Man of the Match sponsor. Dom and Josh are also great supporter of our youngsters, sponsoring the shorts of our mini's, youth, and the very popular Match Day Experience.

Corporate sponsors Harlow Agricultural Merchants are here again. Darrell Clark has rather cleverly bought the firm here for their Christmas bash—at least he'll enjoy the day! Here also are the ever present Three Willows/Ace of Lanes Dave and Mick. You're all very welcome and much appreciated.

Finally, a Happy Christmas to everyone, let's get behind the boys today and we'll see you next year away to Birmingham Moseley.



BARONS STANSTED. YOUR LOCAL BMW RETAILER.

PROUDLY SUPPORTING BISHOPS STORTFORD RFC.






As your local BMW Retailer, and sponsor of Bishop's Stortford Rugby Football Club, we have a range of fantastic offers for BSRFC members and fans. Barons Stansted offers the highest levels of service and expertise in the local area, and is the only Centre for all of your BMW needs.

Whether it's a New or Approved Used BMW, or even a Service, our commitment is to maintain the highest of standards.

For more information or to arrange a test drive*, call us on 01279 755906 or visit www.baronsgroup.co.uk/bmw.

BARONS STANSTED

Stansted Road, Bishop's Stortford,
Hertfordshire CM23 2BT

01279 755906   

www.baronsgroup.co.uk/bmw

*Images used for illustration purposes only. Test drive subject to status and availability.

DIRECTOR OF RUGBY

ANDY LONG



Good afternoon everyone and a festive welcome to you all!

It was another courageous performance in defeat last week against a very organised OE's team. The conditions meant it was never going to be a classic but a game dominated by set piece and key moments. The lads battled hard and I was extremely proud of our commitment to the end.

It's stating the obvious to say that the first half of the season has been disappointing, the number of injuries to key personnel has without doubt hindered us and I'm so proud of the way the squad has remained tight and fought in every game. We know that there are fine margins in sport and if we keep working hard and committing I know we can turn the tide on some of these close losses.

Today we welcome Rosslyn Park who have enjoyed a great first half of the season, a poor opening period in our away fixture allowed for too big a gap to close in the second half. I'm sure they will come to Silver Leys sniffing blood, but wounded animals can be unpredictable.

On behalf of the squad I'd like to wish you and your families a very Merry Christmas and a prosperous New Year

Enjoy the game

Longy



Marcus Cattell



Tom Coleman



Kathy Hills



Adam Vine



Ben Sheath



Danny Johnston



Rob Faiers



Ash Boyle

SPONSORED BY





Industrial Network Cables



A LOCAL COMPANY WITH INTERNATIONAL REACH, SUPPORTING **BISHOP'S STORTFORD RFC**

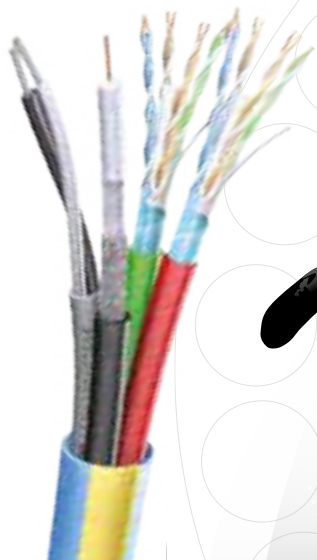
Our cables operate in some of the toughest environments within the industry worldwide.

We design and manufacture cables to the highest performance levels with third party verification, we are specified for use on the world's largest industrial projects.

No secret: Experience, common sense, plain speaking, technical knowhow and the will to deliver.

www.belcom.co.uk

 01279 871 150



ABBOTT'S EDITORIAL



First of all good luck to Andy and the 1st team today against Rosslyn Park! The 1's have been on the end of some very close defeats this year, let's hope they can bring home the win today.

I have played at the club now for over 13 years, joining at 24 representing the 3's Captaining the 4's and now (as I am clearly getting on a bit) a proud Captain of our 5th Team, The Abbott's. We have had a fantastic season thus far, remaining unbeaten throughout our League campaign, regularly fielding sides of 18-20 week in, week out.

A huge thanks should go to Chris Evans who started the Abbott's up a few years ago after the team folded due to a lack of players. He cajoled, arm twisted and bribed a few people back to the game and created a superb culture within the team which has meant all people are welcome, newcomers, seasoned players and half injured warriors looking for one last hoorah.

The success of the 4th Team under first Rob Neal and now Max Oliver's leadership has without doubt meant that the gulf in the quality of rugby has widened between the 4's and 5's and the concern was always that those people that loved playing rugby but couldn't commit to playing week in, week out or were simply new to adult rugby, would simply not have the opportunity to play. I feel, it is first and foremost my role as Captain to ensure that as many people as possible have the opportunity to play rugby. No matter their ability, commitment or

knowledge of the game.

(Trust me, most people I have played with have never really understood the laws anyway)

We try to make the team and indeed the club, a welcome place whereby a great game of rugby is always washed down with a cold beer after the game, no matter the result. We are fortunate to have some really good quality experienced players in our side, the likes of Ben Millard, Ian Cairns, Chris Hardy and Jay Hunt take time to coach and mentor the less experienced players through the games giving them the opportunity to learn and improve.

I also have huge respect for the referee's who turn out every Saturday to officiate us. This is a thankless task and when you ref us, probably a frustrating one! However, their contribution to enabling 35 odd guys to get a game of Rugby on a Saturday is fully appreciated by all who take the field.

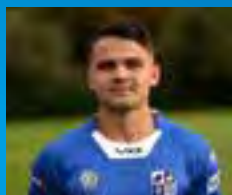
To field 6 adult playing sides at the weekend when so many of our rivals are folding their social teams is something, I am immensely proud of. The support we receive from the club is fantastic and I do genuinely feel that the #oneclub ethos is something worth cherishing and fighting for.

Finally, a huge thanks to our sponsors Croucher Needham (www.cnmadvisory.com) for all of their support this season!



THE PLAYERS

BSRFC 1'S XV 2017/18



ALEX PATTON
SPONSORED BY
Ratcliff & BurrIDGE
ratcliffburrIDGE.co.uk



ANDY CHRISTIE
SPONSORED BY
AVAILABLE FOR
SPONSORSHIP



AUSTIN POPE
SPONSORED BY
119 Production Services
www.119.org.uk



BEN CREASEY
SPONSORED BY
AVAILABLE FOR
SPONSORSHIP



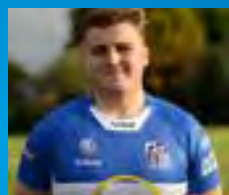
BEN HARRISON-PRICE
SPONSORED BY
The Axe & the Compass
theaxeabraughing.uk



BEN LAW
SPONSORED BY
AVAILABLE FOR
SPONSORSHIP



BAXTER WILSON
SPONSORED BY
Bit Solutions
www.bitsolutions.net



BRAD ETHERINGTON
SPONSORED BY
R W Marsh



BRANDON BOWDEN
SPONSORED BY
Shopworks
theshopworks.com



CAMERON WILSON
SPONSORED BY
AVAILABLE FOR
SPONSORSHIP

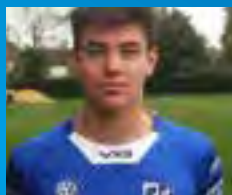


CHARLIE KINGHAM
SPONSORED BY
Recruitability
www.recruitability.co.uk

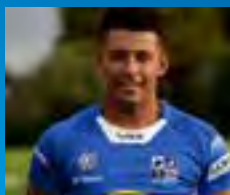


CHRIS SMITH
SPONSORED BY
Yoga with Marcella
yogawithmarcella@gmail.com





CONNOR MAK
SPONSORED BY
 AVAILABLE FOR
 SPONSORSHIP



CONOR AUSTIN
SPONSORED BY
 Family Sankey
lesley.narburgh@roche.com



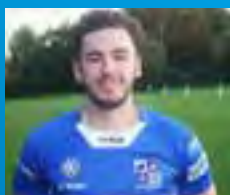
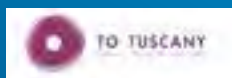
DAVE ALDAM
SPONSORED BY
 Lunch Club
perry@perryoliver.co.uk



DAN ELSOM
SPONSORED BY
 Westbury Garden Rooms Ltd
www.westburygarden-rooms.com



DECLAN CAULFIELD
SPONSORED BY
 T Tuscany
www.to-tuscany.com



DOM LILLEY
SPONSORED BY
 AVAILABLE FOR
 SPONSORSHIP



GEORGE CULLEN
SPONSORED BY
 Mantle Business Centres
mantlebusinesscentres.co.uk



GEORGE FELGATE
SPONSORED BY
 AVAILABLE FOR
 SPONSORSHIP



GEORGE KEEN
SPONSORED BY
 19 Bell Street Dental Practice
odette.lazarus@19bellstreet.co.uk



HECTOR BEVITT-SMITH
SPONSORED BY
 Felsted School
www.felsted.org



JACK SCANTLEBURY
SPONSORED BY
 NFU Mutual
www.nfumutual.co.uk



JAMES APPERLEY
SPONSORED BY
 Japanese Knotweed
knotweedmanagement.co.uk

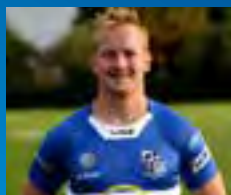




JAMES THACKER
SPONSORED BY
 Multitech
temporary-electrics.co.uk



JAMIE CAMPBELL
SPONSORED BY
 MCMillans Engineering
 Limited
mcmillansengineering.co.uk



JIMMY REA
SPONSORED BY
 Cammas Hall Farm
www.cammashall.co.uk



JOSS LINNEY
SPONSORED BY
 Everyone Active
everyoneactive.com/GrangePaddocks



JON GEORGE
SPONSORED BY
 Nockolds Solicitors
www.nockolds.co.uk



JOHNNY NEVILLE
SPONSORED BY
 Longmores
longmores-solicitors.co.uk



LOUIS CASTIGLIONE
SPONSORED BY
 Neil Ryner - Ryner &
 Partners
rynerandpartners.co.uk



MARK MCCRAITH
SPONSORED BY
 Forward Corporate
 Finance
www.forwardcf.co.uk



MATT TOMLINSON
SPONSORED BY
 Rickard Luckin
rickardluckin.co.uk



MIKE GALLAGHER
SPONSORED BY
 AVAILABLE FOR
 SPONSORSHIP



NICK HANKIN
SPONSORED BY
 Julie Wright - Physio &
 Sports Clinic
www.physio-and-sports-injury-clinic.co.uk



OLI JONES
SPONSORED BY
 Nuffield Health
nuffieldhealth.com/gyms/bishops-stortford





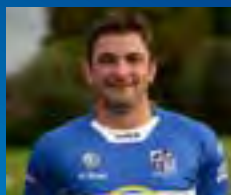
PIERS MARTIN
SPONSORED BY
 Barons BMW Stansted
baronsgroup.co.uk



REECE LANE
SPONSORED BY
 KMD Private Wealth
 Management
www.kmdpwm.co.uk



ROB DUFF
SPONSORED BY
 LCM Scrap Metal
www.lcmscrap.com



RORY BANKS
SPONSORED BY
 The Star at Standon
www.star-standon.co.uk



ROSS BIRD
SPONSORED BY
 BEW Electrical
 Distributors Ltd
www.bewdirect.co.uk



SAM JAMES
SPONSORED BY
 Seneca Reid
www.senecareid.co.uk



SAM COLEMAN
SPONSORED BY
 Bovis Homes
www.bovishomes.co.uk



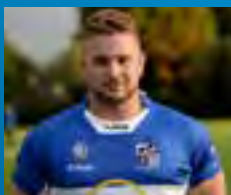
2018-19 1XV CAPTAIN
SAM WINTER
SPONSORED BY
 Pestell and Co
www.pestell.co.uk



SEAN EDWARDS
SPONSORED BY
 Palmer & Martin
palmerandmartin.co.uk



SEB BROWNHILL
SPONSORED BY
 Virtus Property
 Management
www.virtuspm.co.uk



SIMON WASLEY
SPONSORED BY
 Hanbury Wealth
www.hanburywealth.co.uk



STEVE BALL
SPONSORED BY
 Croucher Needham
www.cnmadvisory.com





TOM BANKS
SPONSORED BY
 Russell Partnership
www.russellpp.co.uk



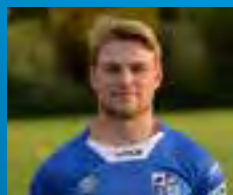
TOM CATTELL
SPONSORED BY
 Chris Morton
chrismorton@gmail.com



TOM COLEMAN
SPONSORED BY
 Radleys
mark.radley@radleys.co.uk



TOM McCRONE
SPONSORED BY
 Hertfordshire Display plc
www.hdprint.co.uk



TOM WALKER
SPONSORED BY
 Orwell Shipping Monaco



WILL PALOMBO
SPONSORED BY
 AVAILABLE FOR
 SPONSORSHIP



WILL SIMMONDS
SPONSORED BY
 Tees Law
www.teeslaw.co.uk



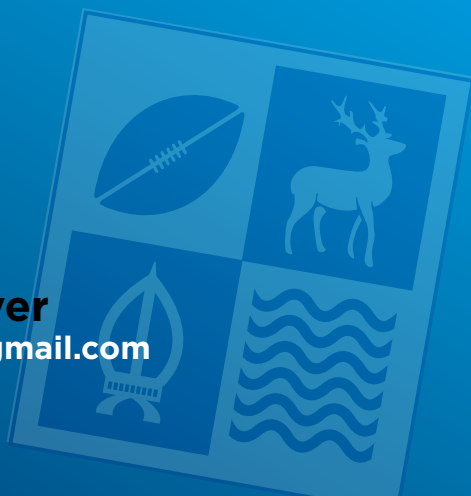
WILL ROBERTS
SPONSORED BY
 R W Pearman & Son
Jeffrey.pearman@farmline.com



INTERESTED?

Sponsor a First Team Player

Contact Julie North: julienorth1@gmail.com





WESTBURY

GARDEN ROOMS

01245 326500

westburygardenrooms.com

Call to visit our Essex Factory and Showroom
46-52 Cutlers Road, South Woodham Ferrers, Essex, CM3 5XJ

BLUES REVIEW

The Blues knew the challenge of playing the league high fliers was always going to be a tough & the cold & wet weather that descended on the UK last Saturday only added to their size of their task.

It didn't take long for OE's to show their potential and with just a few minutes on the clock they powered over for a converted try. Their dominance in the set piece was clearly evident, and causing huge concern for the Blues front row, who as usual were completely outsized by their opposite numbers.

However, this Blues team has shown throughout the season a determination that can't be matched, with Ollie Jones, Rory Banks and Alex Leo making huge collisions in defence and attack we managed to gain some momentum in the game.

The eventual pressure being exerted by the Blues eventually paid off when a well-managed line out led to pressure on the line before Alex Leo powered over to score a converted try in the corner.

This paved the way for the Blues who were tactically superior to their opponents, to constantly build pressure in the OE's 22. Eventually that pressure told as Ben Creasey sneaked over for a try close to the line before Ollie Jones showed great footwork, power and speed to score under the posts to give the Blues an incredible 21-7 lead going into the break.

The second half started in exactly the same way, with the Blues pushing early in the half to see Ben Creasey sneak over for a second, and with Tom Walker kicking superbly all day, the inevitable conversion left the Blues leading 28-7.

With the game now firmly in the Blues hands only the host's desperate defence could keep them out. Held up 4 times over the line, it seems like only a matter of time before the Blues would score again. However OE's had other ideas and showed their own quality with a rare drive into the Blue's half, which led to their second try.

With time and score line firmly in the Blues favour, our players managed the remainder of the game with great maturity and skill to see the game out. A magnificent performance in very testing circumstances.

With Jersey away the next fixture, the Blues will be looking to build on current form to take another step back towards the top of the league.

Finally on behalf of the Blues I'd like to wish you all a very Merry Christmas & a prosperous New Year

Danny Johnston



**HANBURY
WEALTH**

PROUD SPONSORS OF

Bishop's Stortford Rugby Club



Investment planning | Retirement planning | Protecting your family

01279 466 706

info@hanburywealth.co.uk

www.hanburywealth.co.uk

 HanburyWealth



**HANBURY
WEALTH**

Hanbury Wealth is a trading style of Hanbury Wealth Management Ltd, which is authorised and regulated by the Finance Conduct Authority. FCA number 757991



**CROUCHER
NEEDHAM**

accountancy • audit • tax • advisory

PROUD SUPPORTERS OF

Bishop's Stortford Rugby Club

Our passion for business combined with a unique approach to helping our clients, enables us to help you towards:

**MORE PROFIT • LESS TAX
MORE TIME**

Working with us you will be able to concentrate your time on the things you do best - and the things you would rather be doing!



Contact us to arrange a free, no obligation meeting, to chat through how we can help you and your business prosper.

01279 213 320

www.croucherneedham.com

1A BRIDGE STREET, BISHOP'S STORTFORD CM23 2JU
MARKET HOUSE, 10 MARKET WALK, SAFFRON WALDEN CB10 1JZ

We are always on the lookout for your property



**RUSSELL
PROPERTY**
SALES CONSULTANCY LETTINGS

Whether you're a landlord or tenant...
you want to work with someone who understands all aspects of lettings.

Whether you're concerned about process, putting people together or getting things right legally, we can help.

Please call 01279 501500 to speak to one of our property professionals





Whole College

Saturday 22nd September

9.30am-1.00pm

Consistently ranked within the top 100 Independent Schools; based on A Level results

(Telegraph league table)

SatNav for parking CM23 2PQ

Do you want your child to realise their true potential?

Come to our Open Morning

"The school successfully meets its aim to be a place of learning with a broad and balanced curriculum that enables all pupils to fulfil their potential in everything they undertake." ISI Inspection 2017.

Come to the Open Morning or arrange a private visit. We look forward to welcoming you.

Building confidence for life.

01279 838604

admissions@BishopsStortfordCollege.org



Bishop's Stortford College

Co-educational Day and Boarding 4-18 years

www.BishopsStortfordCollege.org

TODAY'S OPPOSITION

ROSSLYN PARK



Rosslyn Park Football Club were founded in 1879 by cricketing friends in north London in order to keep the players together during the winter. There was already a Hampstead Football Club (from which both Wasps and Harlequins sprang), so the cricket club's name was adopted, reflecting the area of Hampstead where the cricketers first played their games in the grounds of Rosslyn House. Their original rugby ground was at South End Green, Hampstead, then Gospel Oak and Acton before a lengthy tenure at Old Deer Park, Richmond until 1956, when Rosslyn Park moved to its current premises in Roehampton.

Originally they wore a blue shirt with white Maltese cross but in 1881 adopted its current red-and-white hoops. It still remains a Football Club, without the need for the word Rugby, and so is correctly Rosslyn Park FC, not RFC.

The club became the first English side to play rugby internationally when they beat Stade Français in Paris on 18 April 1892. In 1975 and 1976, the club played in the final of the John Player Cup, narrowly losing on both occasions.

When English league rugby began in 1987, Park were placed in Division two, which they won. The first team currently play in the third division of the English league system, National League One. Their clubhouse has two bars, which are named after two of the club's famous players – Andy Ripley and Alexander Obolensky.

Last season we won at their place 31-24 but narrowly lost the return here 20-22. This season we visited them on 8th September and lost 25-17 having at one point been 22-0 down!

Park have had an impressive first half of the season winning 10 of the 15 games, a record that sees them currently in 3rd but well in contention for the only promotion position. So today we will once again have to upset the odds if we are to achieve our much needed win.





Proud to support Bishop's Stortford Rugby Club

Wealth management advice to kick-start your financial planning

We provide an experienced wealth management service
and offer specialist advice in a wide range of areas including:

- Investment planning
- Retirement planning
- Inheritance Tax planning

For further details contact GQ Wealth Management on:

Tel: 01279 210085

Email: leigh.gqwm@sjpp.co.uk Website: www.gqwm.co.uk

physio& sports injury clinic

The Physio & Sports Injury Clinic based at Bishop's Stortford Rugby Club,
supporting BSRFC from Minis to Seniors.

We treat all age groups and abilities, providing Quality Treatment for all types of muscle and joint problems in a Friendly and Supportive atmosphere by Experienced Chartered Physiotherapists.

Proud Sponsor of Bishop's Stortford Rugby Club

For appointments and information contact **07944 394096**

EMAIL: physioandsportsclinic@gmail.com

WEBSITE: www.physio-and-sports-injury-clinic.co.uk

Clinics Monday-Saturday with evening appointments available

Julie Wright BSc (Hons) MCSP Chartered Physiotherapist

The Physio and Sports Injury Clinic, Bishop's Stortford Rugby Club, Hadham Road, Bishop's Stortford, Herts, CM23 2QE



Temporary Electrics - Permanent Commitment®

BSRFC SPONSORS

AND SUPPLIERS OF TEMPORARY SITE SERVICES TO
THE UK CONSTRUCTION INDUSTRY SINCE 1998

New Game, New Job?

Check out the latest career opportunities at Multitech:

www.temporary-electrics.co.uk/careers

See if you can join **our** talented team (*no gum shields required*)

temporary-electrics.co.uk

Multitech Site Services Ltd, Multitech House,
Flitch Industrial Estate, Great Dunmow, Essex CM6 1XJ. Telephone: 01371 877060



Supporting the Bishop's Stortford Rugby Football Club



Proud
Sponsors of
the BSRFC
Girls & Ladies
Teams



Bishop's Stortford

t: 01279 755777



London

t: 020 3892 6800

www.nockolds.co.uk





TOTAL SUPPORT FOR COMMERCIAL PROPERTY CLIENTS

Commercial agents who mean business

Coke Gearing
consulting

Chartered Surveyors

01279 758758

- INVESTMENTS
- VALUATIONS
- ACQUISITIONS
- LANDLORD AND TENANT
- PLANNING ADVICE
- DEVELOPMENT
- SALES AND LETTINGS
- BUILDING CONSULTANCY

www.cokegearing.co.uk

PROUD SUPPORTERS OF BISHOP'S STORTFORD RFC

OUR HERITAGE,
OUR PASSION.
YOUR IPA.

greenekingipa.co.uk



GREENE KING
BURY ST EDMUNDS



HR GO RECRUITMENT

SUPPORTING BISHOP'S STORTFORD LADIES RFC

Who are we?

HR GO Recruitment, based locally in Bishop's Stortford since 1997. During this time we have built a solid reputation for providing excellent customer service to both our candidates and clients.

Why choose HR GO Recruitment?

Our team in Bishop's Stortford, collectively possess well over 60 years of recruitment experience. The knowledge and expertise we hold, coupled with our ability to provide a professional, reliable and high standard of service, sets us apart.

If you are
looking for a
friendly, honest
and local agency
then look no further!

We specialise in filling both temporary and
permanent opportunities within the
Commercial, Retail, Industrial,
Engineering and IT Sectors.

CALL 01279 503505

Email: BishopsStortford@hrgo.co.uk

BIT Solutions

Enterprise IT Systems



BIT Solutions are big on ideas, expertise and results

And small where it matters, offering the personal touch and tailored solutions. BIT Solutions are a leading provider of cloud and on premise IT solutions for clients throughout the South of England.

With our enterprise cloud platform located in two of the most advanced datacentres in Hertfordshire, we are able to provide our clients with flexible, high performance and ultra reliable cloud solutions to suit every need.

We also offer strategic IT planning, on premise IT infrastructure design, assistance to in-house IT teams and a range of business IT support plans.

Proud sponsors of Bishop's Stortford Rugby Club

T: 0333 577 2833 | E: info@bitsolutions.net | W: www.bitsolutions.net

Premier support, individually tailored



HELPING YOUR BUSINESS SUCCEED

PROUD SUPPORTERS OF BISHOP'S STORTFORD RFC

Price Bailey offers a full range of compliance and advisory services from audit and assurance to strategic corporate finance, tax consulting, pensions and outsourcing. We are here to help you and your business to grow.

For further information please contact Gary Miller or Tony Pennison:

Gary Miller, Partner

T: 01279 712719

E: gary.miller@pricebailey.co.uk

Tony Pennison, Partner

T: 01279 712716

E: tonyp@pricebailey.co.uk

 **Price Bailey**
CHARTERED ACCOUNTANTS

pricebailey.co.uk

Price Bailey ® is registered as a UK trademark of Price Bailey Group Limited. © 2018 Price Bailey. For more information about Price Bailey and regulatory details please visit www.pricebailey.com/legal.



Expect more

**Legal and financial advice from
experts on your side.**

www.teeslaw.com

Call us on 01279 755200

Tees House, 95 London Road, Bishop's Stortford, Hertfordshire CM23 3GW

Offices also at Chelmsford, Saffron Walden, Royston and Cambridge

Tees is a trading name of Stanley Tee LLP regulated by the Solicitors Regulation Authority. Registered in England and Wales number OC327874. Tees is a trading name of Tees Financial Limited which is authorised and regulated by the Financial Conduct Authority. Registered in England and Wales number 4342506.

THE BEST QUALITY SERVICE
WHAT YOU WANT, WHEN YOU WANT IT.



ANDREW BANKS

Your local wood Specialist
andrewbanks.co.uk

01279 626389

KORU

strength + fitness

OPEN NOW



DON'T DREAM OF IT. TRAIN FOR IT.

Without doubt, the best training facility
in the area. Come and check us out.

Peek Business Park, Woodside, Bishops Stortford, CM23 5RG

T: 01279 506487 E: team@korugym.com

www.korugym.com



Proud supporters of Bishop's Stortford Rugby Football Club



Strategic Financial Planning

Understanding our clients' goals and values, then deliver ongoing strategic advice aligned to those goals and values.

Together we will devise a financial master plan that will answer questions such as "Will I have enough money to do all the things I want to do?" and "Am I doing everything I should be doing with my money?"

The value of your your investment and any income from it can fall as well as rise and you may not get back the original amount invested.

To discuss how we may be able to help you achieve your financial goals call us on

01279 874480

RESULTS GRID, TABLE & FIXTURES

NATIONAL LEAGUE 1

FIXTURE SCHEDULE & RESULTS GRID 2018-19

	Ampt	Bkth	Bir M	BSRFC	Caldy	Camb	Chin	Cind	DMP	Esher	L'boro	OE's	Plym A	RossPk	Roth	Sale
Ampt		33-22	25-17	16.02	2.02	6-13	22.12	54-10	40-29	35-20	43-34	9.03	12.01	30.03	22-8	13.04
Bkth	19.01		30-26	30.03	16.02	2.02	22-14	9.03	15-0	27.04	39-32	10-21	5.01	23-15	13.04	41-24
Bir M	6.04	9.02		5.01	27.04	15-06	33-40	23-24	36-41	23.03	2.03	19.01	48-26	2.02	28-22	31-22
BSRFC	10-29	15-16	52-8		3-13	2.03	26.01	23.03	23-26	26-29	57-25	13.04	9.02	22.12	20-22	12.01
Caldy	19-18	17-25	30-27	9.03		9.02	12.01	31-38	14-08	31-29	43-19	30.03	26.01	13.04	29-33	22.12
Camb	26.01	24-43	13.04	23-22	22-27		20-22	16.02	30.03	12.01	22.12	17-20	32-26	8-17	9.03	36-36
Chin	38-33	6.04	9.03	6-13	24-27	5.01		19.01	16.02	24-18	30.03	20-20	27.04	33-33	2.02	28-21
Cind	9.02	22-22	22.12	0-11	2.03	14-9	21-26		13.04	26.01	12.01	12-32	15-12	29-36	30.03	40-31
DMP	23.03	12.01	26.01	27.04	6.04	3-22	21-23	10-07		2.03	9.02	5.01	22-19	34-33	42-19	29-31
Esher	5.01	7-36	21-38	2.02	19.01	17-10	13.04	10-7	24-25		17-14	16.02	21-24	9.03	15-45	30.03
L'boro	27.04	23.03	35-25	19.01	5.01	14-20	48-46	8-39	39-27	6.04		2.02	06-34	16.02	5-38	9.03
OE's	13-13	22.12	38-27	17-03	34-07	23.03	9.02	6.04	31-22	22-10	48-24		2.03	12.01	27.04	26.01
Plym A	17-5	20-21	30.03	23-19	24-14	19.01	11-26	2.02	9.03	22.12	13.04	15-19		21-35	16.02	14-7
RossPk	10-06	26.01	27-22	25-17	26-10	6.04	2.03	27.04	19.01	17-25	39-31	37-24	23.03		5.01	9.02
Roth	2.03	10-07	12.01	6.04	23.03	14-25	32-26	20-03	22.12	9.02	26.01	33-34	25-14	29-12		32-27
Sale	10-27	2.03	16.02	22-8	26-24	27.04	23.03	5.01	2.02	38-44	38-31	42-38	6.04	23-31	19.01	
																ROUNDS 16-30
																ROUNDS 1 to 15

Season 2018/2019 NATIONAL 1

Results From 15th December

Home Team		Away Team
Rotherham	10-07	Blackheath
Birmingham Moseley	15-6	Cambridge
Rosslyn Park	26-10	Caldy
Darlington Mowden Park	10-07	Cinderford
Old Elthamians	17-3	Bishop's Stortford
Chinnor	24-18	Esher
Sale FC	10-27	Amphill
Loughborough Students	6-34	Plymouth Albion

Season 2018/2019 NATIONAL 1

Fixtures for 22nd December

Home Team		Away Team
Caldy	vs	Sale FC
Plymouth Albion	vs	Esher
Amphill	vs	Chinnor
Bishop's Stortford	vs	Rosslyn Park
Rotherham	vs	Darlington Mowden Park
Cinderford	vs	Birmingham Moseley
Cambridge	vs	Loughborough Students
Old Elthamians	vs	Blackheath

National League 1 - 2018/19

Team	P	W	D	L	PF	PA	PD	TBP	LBP	Points
Old Elthamians	15	11	2	2	411	292	119	7	1	56
Blackheath	15	11	1	3	372	280	92	5	1	52
Rosslyn Park	15	10	1	4	393	335	58	9	1	52
Amphill & District	15	9	1	5	389	270	119	8	4	50
Rotherham	15	10	0	5	382	309	73	7	2	49
Chinnor	15	8	2	5	396	373	23	7	4	47
Caldy	15	8	0	7	336	356	-20	6	3	41
Darlington Mowden Park	15	7	0	8	339	376	-37	7	3	38
Cinderford	15	6	1	8	281	335	-54	4	4	34
Plymouth Albion	15	6	0	9	300	315	-15	5	5	34
Cambridge	15	6	1	8	287	296	-9	2	5	33
Sale FC	15	5	1	9	398	454	-56	6	4	32
Birmingham Moseley	15	5	0	10	404	439	-35	6	6	32
Esher	15	6	0	9	307	392	-85	3	4	31
Bishop's Stortford	15	4	0	11	299	284	15	3	6	25
Loughborough Students	15	3	0	12	365	553	-188	8	4	24

THE TEAMS



PLEASE NOTE THAT OUR BAR LICENCE SPEC
AND GLASS BOTTLES ONTO THE FIELD. REUSABLE, R
SO PLEASE ASK FOR ONE, IF YOU INT

BISHOP'S STORTFORD 1ST XV

BLUE AND WHITE

1	Seb Brownhill
2	Declan Caulfield ©
3	Tom McCrone
4	Sekonaia Kalou
5	Matt Tomlinson
6	James Apperley
7	Dan Elsom
8	Charlie Kingham
9	Tom Banks
10	George Cullen
11	Joss Linney
12	Jack Scantlebury
13	George Keen
14	Rob Duff
15	Nick Hankin

REPLACEMENTS

16	Harrison King
17	Louis Castiglione
18	Jon George
19	Brad Etherington
20	Sam Coleman

Match Day Sponsors



Director of Rugby Andy Long | **Team Manager** Darren Orbart |
Lead Physio Kathy Hills | **Assistant Physio** Adam Mufti | **Assistant Physio** Tom Phillips
Defence Coach Marcus Cattell | **Attack and Backs Coach** Tom Coleman | **Blues Head Coach** Danny Johnston
Backs Transition Coach Ash Boyle | **Forwards Transition Coach** Rob Faiers
Head of Strength and Conditioning Ben Sheath | **Assistant strength and conditioning coach** - Adam Vine

IFICALLY FORBIDS THE TAKING OF GLASSES
RIGID PLASTIC GLASSES ARE AVAILABLE AT THE BAR,
TEND TO TAKE YOUR DRINK OUTSIDE



ROSSLYN PARK

RED AND WHITE

	Nwakor	1
	Vaughan-Edwards	2
	Maguire	3
	Mills	4
	Gillanders	5
	Laventure	6
	Ellis.A	7
	Ellis.H ©	8
	Weir	9
	Lound	10
	Amesbury	11
	Munro	12
	Hayhow	13
	Weightman	14
	Grove	15

Man of the Match Sponsors



REPLACEMENTS

	Spencer	16
	Doran-Jones	17
	Frampton	18
	Marfo	19
	Leonard	20



Heating & Plumbing

20 Rectory Lane, Farnham,
Bishop's Stortford, CM23 1HU,
Email: nharper114@aol.com



01279 771 981
harpersplumbing.co.uk



**You can rely on
a Worcester...**

The only gas boiler manufacturer
to be awarded **Which? Best Buy**
for 6 years running...

**and you can rely
on us to install them**



SURVEYORS | PLANNERS | ARCHITECTS



- Rural & Strategic Planning
- Land & Estate Management
- Agricultural Advice
- Acquisitions & Sales
- Architectural Design
- Farm Business Appraisals & Diversification



Specialists in
Rural Property

With offices in:
Hertfordshire
Warwickshire
Norfolk

01279 77 11 88

sworders.com

gourmetürk
midweek special
MONDAY AND TUESDAY

2 COURSE MEAL
£14.99

MIDWEEK
LUNCH MENU
£11.90



BOTTOMLESS PROSECCO BRUNCH £30pp

SUNDAY
ROAST

£14.45



MATCH REPORT

OLD ELTHAMIANS 17-3 BISHOP'S STORTFORD 1ST XV



Stortford exerted early pressure, but failed to press home the advantage and it was the home side that had the first clear scoring chance when flyhalf, Tom White missed a shot at goal, after Stortford had been penalised at a breakdown in midfield.

Stortford ground their way back into the game and, after a tremendous driving maul took them some 15 metres into the OEs red zone, they were rewarded with a penalty in front of the posts for offside and Tom Banks duly took the three points after 13 minutes.

The hosts bounced straight back onto the attack, though and played some remarkably controlled rugby in the cold, wet and windy conditions, testing the visitors' defence to the full. It was a mistake by the visitors that opened the door for the first home score, however, when an attempted chip kick in midfield was charged down and quick handling by OEs stretched the defence, allowing White to dummy his way over for a try, which he converted himself after 20 minutes.

The remainder of the half was spent mostly in a midfield arm wrestle, with Stortford's marauding loose play cancelling out OEs' clear advantage at the scrums, where the home team's new front row recruit from Jersey, Cameron Holenstein showed up very prominently.

The hosts stretched their lead by three points, 3 minutes into the second half, with White kicking

a good goal, after Stortford were penalised at a breakdown.

The visitors then, though embarked on an extended period of attack, spending several minutes in the OEs 22 but, despite three 5 metre lineouts, wave after wave of individual forward drives and one threatening grubber kick and chase from Rob Duff, they were unable to make the crucial breakthrough, as conditions got worse and worse.

Dan Elsom, prominent throughout for Stortford came closest to scoring, actually touching down from a 5 metre lineout, but the try was ruled out for a previous knock-on. Even when Holenstein was yellow-carded for coming in at the side of a threatening driving maul, though, the home pack maintained dominance at the scrums.

This provided them with a couple of easy escapes from their own territory, eventually getting down into Stortford's red zone, thanks to a penalty to touch. Stortford managed to turn the lineout ball over but, in attempting to run the ball out, threw a poor speculative long pass that fell into space, allowing an OEs back to swoop on the loose ball and scoop it up to centre, James Golledge, who was able to dash over for a try close to the posts with 15 minutes left to go. White duly converted to stretch the lead to 14 points.

Although the visitors battled gamely to the end in the quest for a converted try and the losing bonus point, which their non-stop endeavour probably deserved against a superior OEs side, they failed to find the elusive cutting edge that was needed.



Buy a used car from M J Warner



Your trusted local Volkswagen
retailer since 1980...

...AND PROUD SPONSORS OF

Bishop's Stortford Rugby Club



Shirt sponsors for BSRFC Mitres

Sales

Servicing

Accident repairs

M J Warner

Hare Street, Buntingford, Hertfordshire, SG9 0EA

Telephone: 01763 289 472



www.mjwarner.co.uk



We try harder.

Backup and disaster recovery for Education and Business

CALL NOW

01279 465 654

www.gigasoftdatabackup.co.uk



Opening Hours

Lunch

Open 7 days a week
11.30am to 2.00pm

Dinner

Sunday - Thursday
5.00pm to 11.00pm
Friday & Saturday
5.00pm to midnight

Find Us

24 Hadham Road,
Bishop's Stortford, CM23 2QS

01279 507777/658888

Order Online

www.zara-dining.com

Zara

Indian Dining

Modern Indian Dining in Elegant Surroundings

We are a family friendly restaurant, serving innovative Indian cuisine for those who enjoy good food and wine with friends in a relaxed atmosphere in the heart of Bishop's Stortford.

Why not pop in for just a glass of wine or one of our specially selected cocktails before your meal.

Or order a take-away by phone or from our web site.



LADLERS
RED POLL

JR Farming

Fuelling our 1st XV this
Season with Red Poll Beef !



Providing Bishop's Stortford & surrounding
areas with **SCRUMmy** local beef ...



LADLERS
RED POLL

Ladlers, Dunmow, Essex, CM6 1SP

07729 562996 ladlers@hotmail.co.uk

www.facebook.com/ladlersredpoll

IN THE SPOTLIGHT:

TOM BANKS

Now deep into my 9th season as 1st XV scrum-half, rugby has been good to me with 2 promotions in that time and the opportunity to fly all over the world with England Counties. We have now been humbled slightly with our second season in National 1, not quite emulating the successes of the past. We have unfortunately once again been plagued with injuries that hindered us like it did at the end of last season, which has meant that this year I have had to debut as the smallest blindside flanker to have ever graced the league. We have a few key players due to return in the New Year and so I believe we have the ability to bounce back in 2019 and start to put in a run of victories.

The league is a lot more competitive than last year with anyone on their day being able win, no matter the league position. We have run the likes of Blackheath and Rotherham close and it is clear that the slightest slip up can cost you a match at this level. We are working in great detail to be able to keep these down to minimum and I have no doubt that we will be able to return to winning ways soon.

We are a tight-knit bunch of lads and morale is kept high, which is especially important in difficult times like this. The camaraderie spreads beyond the confines of the squad as you can feel the support of the whole club and community, creating a buzz at Silver Leys on Saturdays and Sundays. Supporters and sponsors all get involved to create such a special atmosphere for us to play in whether its home or away.

After every performance, whether dominant or lacklustre, the support is all the same, with everyone sharing a beer and a song. None more so than my sponsor, Dominic Russell of Russell Properties, who has been a great advocate of the club and whose support to me has been second to none. I can specifically pick on at least one moment in the past where I have returned the favour by helping to retrieve him from the rafters during a strong rendition of 'Climbing Up Sunshine Mountain'. I would also like to take

this opportunity to thank the support of my employers, Weldon Beesly, sponsors of the club, for a steady pay cheque and sympathy when I come hobbling in with injuries on a Monday morning.

We hope to see off 2018 on a positive note and provide you with a good excuse to get really stuck into the festive drinking. I hope you all enjoy the game today and look forward to sharing a drink with most of you after, mine's a Guinness!

Because she missed out during my last edition of in the Spotlight – shout out to Polly 'Tackle Bag' Banks, providing tackling practice since 1995!

Have a Merry Christmas and a Happy New Year!



Nuffield Health – Specialist in you

At Nuffield Health's gym in Bishop's Stortford our clinically trained fitness experts are on hand to guide you in your pursuit of health and fitness.

Classes range from aerobic fitness and calorie burning to muscular conditioning and toning and even classes designed to help you relax and re-energise. Beside structured classes you also get access to a fully equipped gym and swimming pool.

**Book your trial now by calling our team on
01279507002 or visit
www.nuffieldhealth.com/gyms/bishops-stortford**

Bovis Homes is delighted to support Bishop's Stortford RFC



New Bovis Homes coming soon
to Bishop's Stortford

Photography shows a typical Bovis Homes interior

bovishomes.co.uk


BOVIS
HOMES

MID -SEASON REPORTS FROM OUR SOCIAL RUGBY TEAMS

Away from the First & Blues, we continue to buck the national trend in terms of the number of 'Social teams' we are able to regularly field. Our commitment is to provide Rugby for All, irrespective of age or ability. Here the captains of each team give a brief update of their seasons to date.

Mitres – Mike Roberts

It was a tough start to the season for the Mitres. This could not be helped as it was due to many injuries and players having to move up to higher teams. I would like to take this opportunity to thank the Chindits who helped us out no end and enabled us to field a team even though it meant, on a couple of occasions, themselves having to forfeit and rearrange some of their games.

This just shows how the club is moving forward and there is more unity now between the teams. Although it was a shaky start with a LDL we soon got back to winning ways & are now on a four game winning streak. This has nothing to do with me returning from injury of course.

Now we have players returning and new faces joining we are looking forward to the second half of the season.

We would also like to thank MJ Warner for their continued support and I hope everyone has a good Christmas and New Year. See you all in 2019 and good luck to all the teams for the second half of their season.



Abbots – James Lipscombe

We have had a fantastic first half of the season only losing one game away to Cheshunt 3's. (I'd like to add at this point that I am still unbeaten as I did not play in that game, and completely blame the loss on my Vice Captain Chetan who did)

Unfortunately, at the start of the season we had 3 teams drop out of our league due to the fact that they could not fulfil fixtures due to a lack of players. It is always sad to see the demise of teams at long established clubs and I wish those clubs the best for the future. Quite the opposite has been true of the Abbott's this year. We have regularly managed to field sides of 18-20 players both home and away which is something as a club, we should be proud of.

We have had some 50 point + victories, namely over Datchworth & Welwyn and I think what has pleased me most is that people are happy to play out of position and muck in for the good of the team. We are coming into Christmas top of our league by 3 points and will do our best to maintain that winning momentum to the end of the season.



Chindits – Max Oliver

The Chindits have had somewhat of a disjointed start to the season with some games being cancelled due to the opposition and some being postponed due to our own player availability. The fact we have so far only had one home game also hasn't particularly helped!

So far from our 8 fixtures we have had 4 wins and 4 losses with our best result being a 30-6 victory against Hatfield 1s and a hard fought 31-28 win away at Weston, whose pitch has more resemblance to a cow grazing field than a rugby pitch.

We are hoping that the second half of the season will bring us some more rugby at Silver Leys and some more success as we head into the cup competition.

Touch Rugby – Neil Clarke

Wednesday night – the highlight of the week as its Touch night, it seems the logical time to go and run around a rugby pitch. Just home from work, drop the bags, say 'Hi' to the kids, throw something down our mouths then out we go.

Over the years the touch group has grown in numbers, and despite peaks over the nicer months and dips in the not so nice months, we still turn out – the welcome beer at the end of the session may have something to do with it!

Touch is a superb game, open to all ages, sexes, all levels of fitness, it delivers teamwork and most importantly it's fun and sociable. Rules are straight forward: no tackling, no kicking, rolling subs so natural breaks are taken (some more often than others).

Friendly fixtures with local touch groups are regular and we put on our own event during the summer, which is a huge success and welcomes teams from Saracens to Royston.

A real mix of fat, tall, bald, fast, healthy, crazy, small & quick players, with representation from the home nations as well as from Harlow; some can pass, some can catch, some are buffoons, some (most?) are terribly unfit but all are up for the enjoyment of the game.

Come and have a go – we are the guys and girls with the music on a Wednesday night.

Reedside Ltd

(Ben Clarke)

Offices To Let

From starter units of 150sq. ft. increasing in size.
All with parking, near to railway station.
Keen prices, lease or licence.

Tel: 01279 658 301

Fax: 01279 506 126

Email: jsbclarke@zoo.co.uk

Properties:

The Maltings, Southmill Road, Bishop's Stortford, Herts.

The Maltings, Station Road, Sawbridgeworth, Herts.



Essex Commercial Photography
www.davidhawkins.biz
mar@hawkins.biz
08707 874 184



WE ARE VERY PROUD TO SUPPORT
BISHOP'S STORTFORD RUGBY FOOTBALL CLUB
GOOD LUCK FOR THE REST OF THE SEASON




**CONNECT
SCAFFOLDING**


**CONNECT
EVENTS**


**CONNECT
HOISTS**



Safer, easier, quicker ... better connected!



EXCELSIOR KITCHENS

QUALITY | EXPERIENCE | SERVICE

Established in 2000, Excelsior Kitchens are one of the leading fitted kitchen specialists in East Anglia, the South and London. With a wide range of materials, colours and styles, we can find a solution for all projects, budgets and locations. Our experienced designers can offer expert advice and a professional service.

EXCELSIORKITCHENS.COM

3 Takeley Business Centre, Dunmow Road, Takeley, Essex, CM22 6SJ - T 01279 870700

WORK HERE



Thremhall Park is a beautifully restored, classic neo-Georgian building, set in 12 acres of historic parkland. We offer modern serviced offices, co-working spaces, virtual services & meeting rooms.

Call 0333 00 66 330
Mail hello@mantlebusinesscentres.co.uk
Visit mantlebusinesscentres.co.uk



THREMHALL PARK
STANSTED

We'll work around the clock to find a buyer for your property...



**RUSSELL
PROPERTY**
SALES CONSULTANCY LETTINGS

Considering a move this year?

With a wealth of local knowledge Russell Property can advise you on the best ways to maximise your homes full potential when moving.

Please call 01279 501500 to speak to one of our property professionals who will help guide you through the moving process.





Propel your business into the **New Season!**

Find out how we can help reduce costs in your office and make life easier for you and your staff with increased productivity and profit!

System One will streamline your office workflow with a range of multi-functional devices to suit both your working environment and your pocket.

System Two will design, print and provide mailing services, helping you to promote your business, services or products.

Get in touch now to find out more...

SystemOne
SIMPLE OFFICE SOLUTIONS

01279 602700
www.systemone.co.uk



SystemTwo
PRINT SOLUTIONS

01279 602709
www.systemtwo.co.uk

yoga with Marcella

vinyasa  flow



Benefits of Yoga

Yoga is a beautiful exercise for both the body and the mind.

- . Increased Core Strength
- . Lowers Blood Pressure
- . Increased Flexibility
- . Improved Intuition
- . Improved Digestion
- . Body Detoxification

What is Vinyasa Flow Yoga?

The word "vinyasa" can be translated as "arranging something in a special way," like yoga poses for example. Vinyasa Yoga is a style of yoga that focuses on flow. Vinyasa Yoga movements are very smooth and each pose connects to the next with either an inhale or an exhale.

**"YOGA IS
THE PRACTISE
OF QUIETING
THE MIND"**


PANTAJALI




Book Now:


- . Classes in and around:
Great Dunmow,
Bishop Stortford, Henham
and Harlow
- . Private and group bookings
also available
- . Specialising in Yoga
for athletes
- . Trained in pregnancy yoga
- . Bishops Stortford 1st XV
Rugby team official sponsor
and Yoga Instructor


 @yogawithmarcella

 @marcellayoga

 @yogawithmarcella

yogawithmarcella@gmail.com 

07852 197539 

/yogawithmarcella 

www.yogawithmarcella.co.uk

BSRFC Ladies Update

By Nikky Wilkins

The start of the 2018/19 season saw BSRFC Ladies lose a few strong players with long-term injuries, driving the team into recruitment mode.

The first three matches brought determination and perseverance into our game plan – players making to make full 80-minute matches was a massive shock to the system! These players stepped up and made a difference (on the promise of oxygen afterwards).

There have been many memorable moments; Raquel Obama has finally managed to run in a straight line during a match – which has made the forwards very happy.

Speaking of forwards, some of them, Carleigh LaLonge, Georgia Read and Becks Hall have completed at least one offload. Strong progression there – some of us are still working on that.

One of our players, Vicki Richards, who is a big ball carrier and makes other teams wish they hadn't let her pick up pace, managed to place the ball the wrong way during one match – greatly confusing the opposition who kindly redirected her back to BSRFC... maybe a new strategy, or maybe those offloads will come in handy?

On the coaching side, we have welcomed Paddy Dean – adaptations are being made and structure is appearing – plus, the fish and chips at our inside sessions certainly help. Specialist coaches have been along to impart their wisdom from handling to scrummaging, which has boosted a lot of confidence.

The support of our sponsors, Charterhouse Voice and Data, HR Go and Nockolds Solicitors (we always love more stash!) and the club has been amazing – Collin Tilley surprises us every time by knowing each of our player's names and position! It's amazing – knowledge is power! A big thank you to those on the sidelines, and our family who stand in the cold and then have to put up with us moaning of post-match aching muscles (and helping us to conquer the stairs afterwards).

Throughout the first half of the season we have welcomed a variety of new, beautiful faces to the Ladies' family, some with experience and some without – the curiosity of this odd shaped ball has kept them coming back every Tuesday evening (7.30pm if anyone fancies it?)

We are definitely ready for what the second half will bring us. Hopefully it will be full of tries, laughter and more players!

Looking for a last minute Christmas present?

Our cheeky calendar is available online and from the club shop. Available in desk and calendar formats, the calendar is £10 (plus postage if bought online) and every single penny is donated to The Eve Appeal, a charity which raises awareness and funds ground-breaking research into the five gynaecological cancers.



Bishop's Stortford Independent

www.bishopsstortfordindependent.co.uk

est: 2017 | Publication day: Wednesday | 01279 216515



7,882

Publisher's
statement

weekly readership

51,100

Publisher's
statement

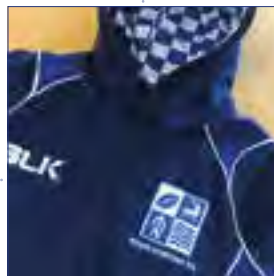
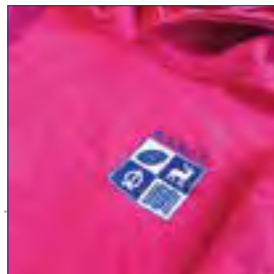
unique browsers



TRUST LOCAL

 ILIFFE MEDIA

Bishop's Stortford RFC Club Shop



OPENING TIMES:

Saturday: 12.00 noon - 3.00pm
(1st XV match days only)

Sunday: 9.00am to 12.30pm

For further information please see the club website: www.bsrfc.co.uk
or contact **Bob Winnington** on
07988 646 384.



Unit 14 Twyford Business Centre
London Road
Bishop's Stortford
Herts
CM233YT
Tel: 01279 505072
Fax: 01279 508004



We pride ourselves in providing you with a one stop shop for your Self Drive Hire

Storage, haulage and Garage service requirements. Our extensive fleet has Cars, People Carriers, Small vans, Pannel vans, Luton vans, 7.5 tonne, 18 tonne, 32 tonne & 44 tonne trucks &

Trailers for self drive hire purposes. We can offer substantial discounts on long term and contract hires.

Our well equip workshop can service and maintain most makes of cars and HGV vehicles and we can offer a range of courtesy vehicles whilst your vehicle is in being repaired with us*.

Don't delay call us today on 01279 505072 one of our helpful staff will see to your requirements.

Proud Sponsors of The Bishop's Stortford Rugby Club .

The driving force behind "The Bishop's Stortford Rugby Club"



STORT BLINDS

INDIVIDUAL STYLE

YOUR LOCAL BLIND AND SHUTTER SUPPLIER

BLINDS | SHUTTERS | AWNINGS



CALL FOR A FREE ESTIMATE

www.stortblinds.co.uk | Tel: 01279 504121

RESETCRYO

CRYOTHERAPY

WHAT IS CRYOTHERAPY?

Step Inside our
Cryochamber & after
3 minutes you exit
feeling Rejuvenated,
Refreshed & RESET.



As our state of the art electronic chamber drops to -85°C temperature you will be provided with all of the equipment necessary to enjoy Cryotherapy safely. Full-Body Cryotherapy stimulates cold receptors all over your body and triggers innate biological mechanisms within yourself. You'll notice an Adrenaline kick almost right away & your body will begin an anti-inflammatory response to the cold temperatures in order to increase blood flow & circulation to key parts of the body whilst restricting blood flow to your extremities.

**Replenish, Rejuvenate
and Reset your body**

Benefits of Full-Body Cryotherapy:

- Metabolism boost for 5-8hrs. Up to 3 times faster rate than normal, promoting weight loss. On average burns between 500-800 calories
- Improves the signs of ageing
- Alleviation of depression, anxiety, fatigue, insomnia, migraines & the effects of stress
- Enhanced energy and releasing "feel good" endorphins
- Decreased muscle soreness, spasms, and inflammation
- Pain relief from disorders such as rheumatoid diseases and fibromyalgia
- Faster, more efficient recovery from the stress of competitive sports or training.

BOOK NOW!

TALK TO JACQUI OR EMMA

 **01279 297070**

 **resetcryo**

 **resetcryo.co.uk**

Reset Cryotherapy Studio
Falconers (Opposite 'The Hand & Crown')
High Wych Rd
Sawbridgeworth.
CM21 0AY

Each Session is 3 minutes of Cryo, though we allocate you a total time of 15-30 mins with us.

Single session	£50
All New customers offer 4 sessions in 14 days	£100
4 sessions (single user) To be taken within 3 months	£140
8 sessions (single user) To be taken within 6 months	£240
Monthly unlimited sessions (single user)	£240

Groups of friends, family, organisations.

10 sessions. To be used within 6 months	£350
20 sessions. To be used within a year	£700

FIVE 'FASCINATING' FACTS THAT YOU MIGHT NOT KNOW ABOUT BSRFC

Amaze & astound your family & friends over Christmas lunch with these 5 bits of Stortford related trivia.

1. A £3 bank deposit from pre WW2 kept Bishop's Stortford as the name of the Club on reconstitution in 1951; otherwise we might have been called something very different!

In 1951 a few former player/supporters met to recommission the Club with the intention of rebranding it East Herts RFC – at least they were until someone remembered the sum of £3 standing to the credit of Bishop's Stortford RFC from its pre WW2 existence.

2. Narrow 0.6% margin gains Bishop's Stortford a place in London NW3 League.

Leagues were preceded by County Merit tables the results of which, it is said, were taken into consideration when identifying which League clubs were allocated to which league. It is said that Bishop's Stortford qualified ahead of the next Hertfordshire Club (Barnet Elizabethans) by 0.6% thus gaining entry into London North West 3.

3. Leagues started in 1987-88 with Bishop's Stortford gaining promotion at the end of the first season

League Rugby started for Bishop's Stortford in Season 1987-88 with 11 teams in the London North West 3 playing each other just once. Home and Away fixtures were not introduced until 2000/01

4. No prizes for guessing which club we've played most often in League rugby

Here's a list of the clubs we've played most often since the start of league rugby & our record against each of them

	Played	Won	Drawn	Lost
Old Albanians	27	13	1	13
Canterbury	18	6	1	11
Barnes	17	6	1	10
Worthing	16	6	1	9
Hertford	16	8	0	8
Staines	15	10	0	5
Dorking	15	6	0	9
Cambridge	14	8	0	6
Tring	14	12	0	2

5. Record league win – Record league defeat

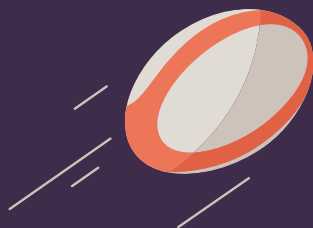
Bishop's Stortford's biggest League win was against Lowestoft & Yarmouth 102 – 15 in January 2000; the same month as our biggest league defeat which was by Richmond 22-83 but in 2006. In 2011-12 Bishop's Stortford had a winning sequence of 16 games undefeated yet finished 4th in the league. The following season (2012/13) they had an 11 game winning sequence and finished top.

(Thanks goes to Paul Maxfield for the research)



FORWARD.

Corporate Finance



Proud sponsors of Bishop's Stortford RFC

Helping you complete

Business
acquisitions

Management
buy outs

Business
sales

Independent corporate finance,
consulting and private equity services
for East Anglia and the South East.

forwardcf.co.uk

T: 01279 215559 E: hello@forwardcf.co.uk

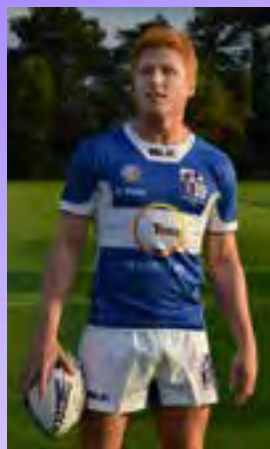
Thremhall Park, Start Hill, Bishop's Stortford CM22 7WE

ANDY TODD

PHOTOGRAPHY



OFFICIAL PHOTOGRAPHER OF
BISHOP'S STORTFORD RFC



TO BUY PHOTOS, OR COMMISSION A PHOTO SHOOT, GET IN TOUCH:

T: 07903 816279 | E: ANDY@ANDYTODD.CO | W: ANDYTODD.CO/BSRFC



PROUDLY SPONSORED FOR 2018-19 BY





accuro

supporting people with a disability

Proud to be BSRFC Chosen Charity

Accuro is a small, vibrant local charity providing a range of specialist services for children, young people and adults with a disability in West Essex.

Get in touch

01279 870297 | 01279 871133

enquiries@accuro.org.uk

www.accuro.org.uk



Registered Charity No:

1054296

Tocher House, Dunmow Road, Bishop's Stortford, CM22 7TA

BISHOP'S STORTFORD RFC MATCH DAY EXPERIENCE

BEHIND THE SCENES WITH THE 1ST XV



As part of the Clubs ethos 'to be a strong and successful rugby club united from Senior to Mini's, trusted and valued by our community' the BSRFC Director of Rugby, Andy Long, Club Captain Sam Winter, & the rest of the 1st XV Squad provide an insight for our "Mini & Junior" Members into what goes on behind the scenes as the Players prepare for a National League

1 Match. The day kicks off with a Q&A in the 1st XV Changing Room, followed by Training, Games & Warm up Sessions with the Coaches and Players. They then form the "Players Tunnel" alongside the "Blazers" to welcome both the opposition and the 1st XV onto the pitch before the game. Their experience culminates with Post Match Photos alongside the Players.



SPONSORED BY

**RUSSELL
PROPERTY**

**SALES
CONSULTANCY
LETTINGS**



Why not join Bishop's Stortford Rugby Club?

As an Associate member:

- You receive notices and newsletters
- Will be entitled to a reduced entrance fee on 1st XV Match Days
- 10% Bar Discount
- Become a part of a thriving and vibrant community of like minded people

MEMBERSHIP

Associate Membership

Amount

£ 75.00

CONTACT DETAILS

Name:

D.O.B.:

Contact address :

Postcode:

Telephone :

Mobile :

Email :

Hand this form with your payment to a member of the bar staff or contact the Membership Secretary – contact information on the website.

**For Playing, Non Playing and Family Memberships
please check the website for details:**

www.pitchero.com/clubs/bishopsstortfordrfc/signup



Your trusted
technology partner to
transform and connect
your business.



Proud sponsors of the
Bishop's Stortford Colts
and Ladies Teams.



WESTBURY

WINDOWS & JOINERY

01245 326510

westburyjoinery.com

Call to visit our Essex Factory and Showroom
46-52 Cutlers Road, South Woodham Ferrers, Essex, CM3 5XJ